



NEW ZEALAND THOROUGHBRED RACING

RACING OPERATIONS | MONTHLY REPORT
TUESDAY 11 NOVEMBER 2025

New Zealand Thoroughbred Racing Inc

18 Dick Street, Cambridge 3434

E: office@nztr.co.nz | nztr.co.nz

Staff Changes & Introduction	3
Licensing & Registrations	4
Racing Operations	5
Education & Training	6
Welfare	7
National Thoroughbred Week	9

NZTR STAFF CHANGES & INTRODUCTION



MITCH LAMB | GM - RACING

With over 25 years' experience in international racing, wagering and media, Mitch has led growth and innovation across OlyBet Europe, Tabcorp, William Hill and Sky Channel, specialising in audience engagement and high-performing teams.



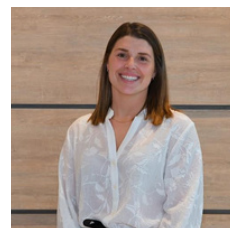
DARIN BALCOMBE | GM - SPECIAL PROJECTS

Darin Balcombe moves into the role following more than two decades in the racing industry and a successful tenure as NZTR's Chief Operating Officer, applying his deep industry experience and operational insight.



CHARLOTTE MILLS | RACING CONSULTANT

Charlotte has been appointed Racing Consultant (12-month term) and brings over a decade of executive experience from Racing and Wagering Western Australia (RWWA), where she served as Chief Racing Officer and led on animal welfare, racing operations, industry engagement, and national strategy.



SAM FURSDON | GM - WELFARE & INDUSTRY CAPABILITY

Sam brings over 15 years experience in the New Zealand racing industry, her work has spanned horse welfare and industry development, applying a strong evidence-based approach built on a Bachelor of Science in Equine Studies and project-management qualifications.



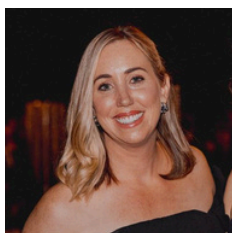
ZAC REYNOLDS | GM - BRAND EXPERIENCE, COMMUNICATIONS & INDUSTRY PROMOTION

Zac brings nearly 20 years in global racing and wagering, including senior roles at Tabcorp, Sportingbet and Churchill Downs, and founding two US agencies focused on digital fan engagement.



DAN SMITH | GM - STRATEGY & TRANSFORMATION

Dan has been with NZTR since February 2018, leading major strategic projects such as the LOVERACING.NZ brand launch and The Grand Tour Racing Festival. Before NZTR, he held a strategy role at TAB (now Entain) and brings 20+ years of experience across racing and wagering.



CATLYN CALDER | HEAD OF THOROUGHBRED WELFARE

We're delighted to welcome Catlyn Calder as NZTR's new Head of Thoroughbred Welfare. Catlyn brings extensive experience in equine welfare and a strong commitment to ensuring the health, safety, and wellbeing of our Thoroughbreds both on and off the track.

LICENSING & REGISTRATIONS

CONCUSSION POLICY

An updated concussion policy has been circulated. This follows a review of our concussion management programme, prompted by inconsistencies identified by our consulting neuropsychologists.

The policy includes:

- o In-clinic baseline testing for all Jockeys.
- o A Jockey stand down period for at least one race for all Jockeys who suffer a race fall to ensure a comprehensive assessment by paramedics.
- o Structured concussion diagnosis by our medical advisor, following on-site paramedic assessments.
- o Immediate commencement of ProActive Health's management services upon confirmed or suspected concussion.

This policy will come into effect once the industry consultation is completed.

GENERAL TRUST FUND

First Quarter Summary for Season 2025-2026

Loss of Earnings (LOE) Claims

- First quarter: 13 claims approved, totalling \$25,200.00
- Year-to-date: 13 claims, \$25,200.00
- Comparison: Same period last season – 10 claims, \$13,000.00

Hardship Claims

- First quarter: 4 claims approved, totalling \$30,125.80
- Year-to-date: 4 claims, \$30,125.80
- Comparison: Same period last season – 3 claims, \$30,000.00

Helmet and Vest Replacement Subsidies

- First quarter: 7 subsidies approved (6 helmets, 1 vest), totalling \$3,476.90
- Year-to-date: 7 subsidies, \$3,476.90
- Comparison: Same period last season – 4 subsidies, \$1,875.45

Overall Totals

- Current season: 24 claims approved, totalling \$58,802.70
- Comparison: Same period last season – 17 claims, \$44,875.45

RACING OPERATIONS

REMINDER: INFORMATION TO RACING BUREAU

The National Racing Bureau reminds Clubs of the importance of providing the required five track updates prior to race meetings, along with timely notification of race names and orders. A recent issue arose when acceptances were delayed after race names were not received until 11.30am.

VET CERTIFICATES

NZTR is reviewing the level of latitude currently being applied regarding veterinary certificates and the subsequent waiving of fees when a horse develops an issue after nominations, either before or after fields have been released.

Delays in receiving these certificates are creating significant additional work for both the Bureau and Accounts teams. Further information will be provided in the coming weeks.

TRIPLES SECTIONAL TIMING: PROJECT UPDATE

- Live GPS-powered graphics were successfully displayed on Trackside during Melbourne Cup Day at Ellerslie - a major milestone for the project.
- Final fit-outs are currently being completed at tracks across the Central North Island.

For any questions, please contact amy.carter@nztr.co.nz, who is managing the rollout on behalf of NZTR.

REMINDER: CAMERA TOWERS SAFETY REVIEW

Scissor Lift Specifications and Approval

If a Club's towers have been deemed unfit for use, the Club must provide a temporary structure (e.g., scissor lifts) until remedial works or replacements are completed. For clarity, the required minimum specifications can be found [here](#).

All temporary structures must be approved by NZTR, Entain, and the RIB at least 14 days prior to the next raceday.

RACING OPERATIONS

REMINDER: CAMERA TOWERS SAFETY REVIEW

Remedial Works and Replacements

The same approval process (requiring a minimum of 14 days' notice) applies to any remedial work undertaken to make existing towers safe for use. Evidence of this work must be provided to Goleman Group for sign-off.

If a Club plans to replace a tower that cannot be repaired, the new structure must also be formally approved by NZTR, Entain, and the RIB.

For all queries and updates, please contact amy.carter@nztr.co.nz in the first instance.

EDUCATION AND TRAINING

SPORTS TURF APPRENTICESHIPS

- Primary ITO are enrolling now for Sports Turf apprenticeships starting in March 2026. View more information [here](#).

CONTINUING PROFESSIONAL DEVELOPMENT (CPD)

- CPD goes live next week for all Class A and B Trainers. This season's focus is on equine welfare and gathering data to help inform the industry's future.
- CPD remains a key part of maintaining professionalism within our industry and plays an important role in shaping our public story — demonstrating our commitment to high standards and transparency.

WELFARE

SHAPING THE NZTR THOROUGHBRED WELFARE STRATEGY 2026

Work is now underway on the development of the NZTR Thoroughbred Welfare Strategy 2026, a refreshed roadmap for our welfare priorities and initiatives over the next three years. Over the coming weeks, we will be engaging with various RIOs and Clubs to gather insights and feedback on proposed initiatives. This collaborative approach will ensure the strategy reflects the shared commitment of our industry to continuous improvement in Thoroughbred welfare.

EQUINE CREMATORIUM OPENS - A DIGNIFIED END-OF-LIFE OPTION

An important milestone for equine welfare was reached on 30 October 2025, when NZTR Chair Russell Warwick officially opened New Zealand's first dedicated Equine Crematorium.

The facility, now live at ruralguardian.org.nz, provides a professional, compassionate, and ethical end-of-life option for horses.

We encourage RIOs and Clubs to share constructive communications with members about the role this facility plays in ensuring every horse can receive a dignified and ethical end-of-life pathway.

Key themes to highlight include:

- Ethical treatment
- Dignity and safety
- Research and education

WELFARE

EQUINE CREMATORIUM, HORSE AMBULANCE AND FATALITY LOGISTICS

NZTR continues to strengthen welfare support for horses that pass away due to training, trial, or race incidents. This includes dignified cremation services, specimen retrieval for research, and the continued use of the Horse Ambulance Trust (HAT) to ensure horses are treated with care and respect at every stage.

To support this work, NZTR has partnered with Animal Burials to provide a respectful and timely collection service for horses north of Taupō.

Richard Logan (027 497 6058) is the direct contact for on-track collections in this region and should be contacted immediately in the event of a fatality.

For the upcoming season, NZTR has committed to fund 50% of transport costs and cover the full cost of cremation. Collection costs vary depending on location.

A summary of current arrangements:

- Trackwork Fatalities: NZTR covers cremation and part of the collection cost, as well as post-mortems where appropriate. In the central and southern regions, transport may also be provided via the Horse Ambulance Trust (HAT).
- Raceday or Trial Fatalities: NZTR covers cremation, all transport costs (often supported by HAT), and post-mortems for cardiovascular or sudden deaths.
- Stable Accidents or Non-Track Incidents: No samples are collected; disposal remains the responsibility of the owner.

This commitment will be reviewed for next season with planning underway to extend similar services to the South Island, ensuring nationwide access to dignified end-of-life care and ongoing research support.

CONTACT US

For any welfare-related queries, please email ThoroughbredWelfare@nztr.co.nz

NATIONAL THOROUGHBRED WEEK

ABOUT NTW

Together, NZTR's marketing, communications and welfare teams are excited to be supporting National Thoroughbred Week, a Trans-Tasman initiative which will see over 20 farms, stables, racing clubs and aftercare facilities across New Zealand 'open their doors' and welcome the public in for a unique behind-the-scenes experience. National Thoroughbred Week runs from 20-24 November and encourages the public to come and see the horses, meet the people who care for them, and ask any questions. While host registrations are now closed, for those in the industry who want to get involved, we're encouraging participants to take part in the 'Five Mates Challenge' and bring along five 'non-racing' friends or family to one of the many events across the country. Find out more at thoroughbredweek.co.nz.

Talk about National Thoroughbred Week to your network. Please pass this to your colleagues, clients, friends, local colleges, community groups. Thank you for being part of the side of racing that most people never get to see. Let's show New Zealanders what our industry is really about.

Hear from National Thoroughbred Week Ambassador, Gracie Hitchcock [here](#), and Cambridge Stud's Scott Calder [here](#).

A purple rectangular graphic with a faint background image of a horse and people. In the top left corner is the National Thoroughbred Week logo, which consists of a white horse head silhouette and the text "National Thoroughbred Week". In the top right corner, the website "thoroughbredweek.co.nz" and the dates "20 - 24 November 2025" are written in white. The main text in the center reads "Free behind the scenes access to studs and stables all around New Zealand!". Below this, the text "The 'Bring 5 Mates' Challenge" is written in white. At the bottom, a smaller white text block says "We're calling on racing participants, owners and fans to bring 5 people to a National Thoroughbred Week event who have never been to a racecourse, Thoroughbred stable or farm."/>

National Thoroughbred Week

thoroughbredweek.co.nz
20 - 24 November 2025

Free behind the scenes access to studs and stables all around New Zealand!

The 'Bring 5 Mates' Challenge

We're calling on racing participants, owners and fans to bring **5 people to a National Thoroughbred Week** event who have never been to a racecourse, Thoroughbred stable or farm.



New Zealand Thoroughbred Racing Inc

18 Dick Street, Cambridge 3434

nztr.co.nz

Phone: 0800 946 637

International: +64 4 576 6240

Fax: +64 4 568 8866

Email: office@nztr.co.nz